



EPS 60

Electronic Power Supply

System-Features

- 7,2 kW maximum power
- Continuously variable power control
- Service-friendly due to pluggable connections
- Less space required/ reduced footprint

Advantages

- 10% increase in efficiency
- Improved reignition
- Longer lamp life
- Compact design

EPS 60

The **EPS 60** is an electronic **power supply for UV discharge lamps with a maximum power of 2.0 kW to 7.2 kW**. The EPS is ideal for doped lamps with an arc length of up to 500 mm and mercury lamps up to 680 mm.

Features

The **rectangular current output of the EPS causes an approximately 10% greater UV yield** for the same electrical power compared to the **sinusoidal power output of a conventional transformer/ choke ballast**.

Additional features:

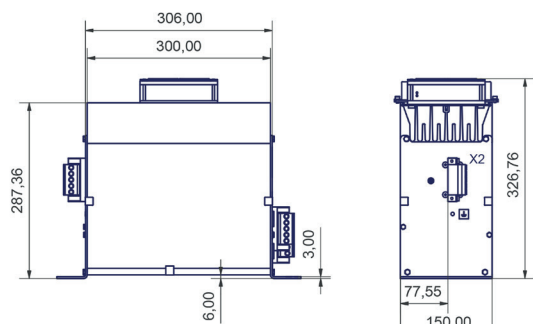
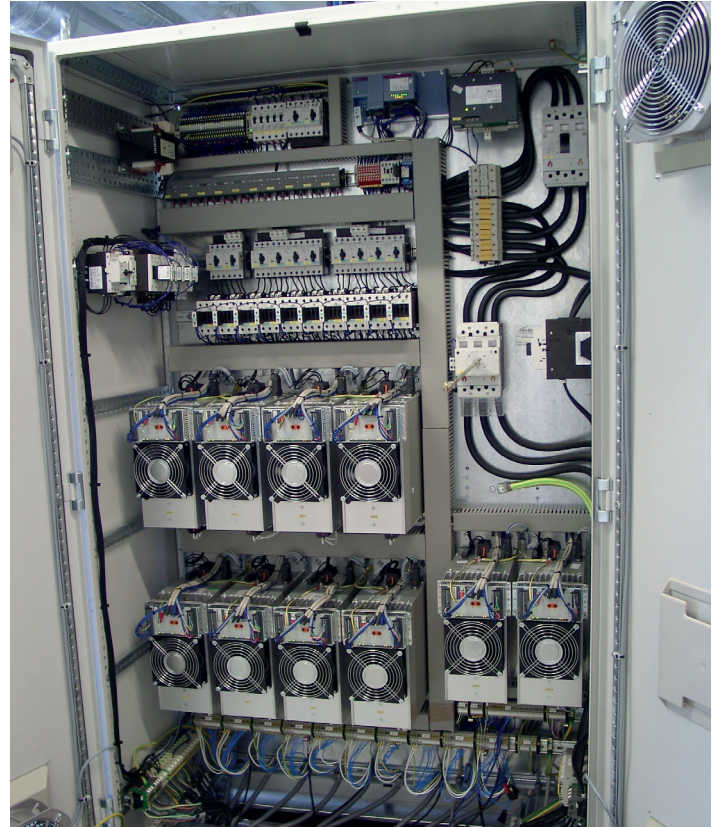
- Integrated ignitor
- Improved lamp reignition compared to conventional technology
- Compact design, approximately 50% smaller footprint for a 10-lamp-system
- Continuously variable power control, application dependent between 11% and 100%

Technical Data

Maximum power output	7,2 kW
Mains supply	400 V – 480 V, 50/60 Hz
Power control	11 % - 100 % with analog signal 1,1 V - 10 V DC application depending
Potential free error signals	Total error Lamp error Earth fault Phase loss Over temperature
Output signals	UV ready UV on

Application example

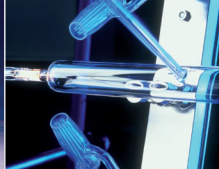
Switch cabinet with 10 EPS: 10 x 2,0 to 7,2 kW






Curing
Drying
Bonding
Potting
Measuring







Dr. Höhle AG UV Technology, Lochhamer Schlag 1, 82166 Gräfelfing/München, Germany
Phone: +49 89 85608-0, Fax: +49 89 85608-148. www.hoenle.de

Operating parameters depend on production characteristics and may differ from the foregoing information. We reserve the right to modify technical data. © Copyright Dr. Höhle AG. Updated 02/16.